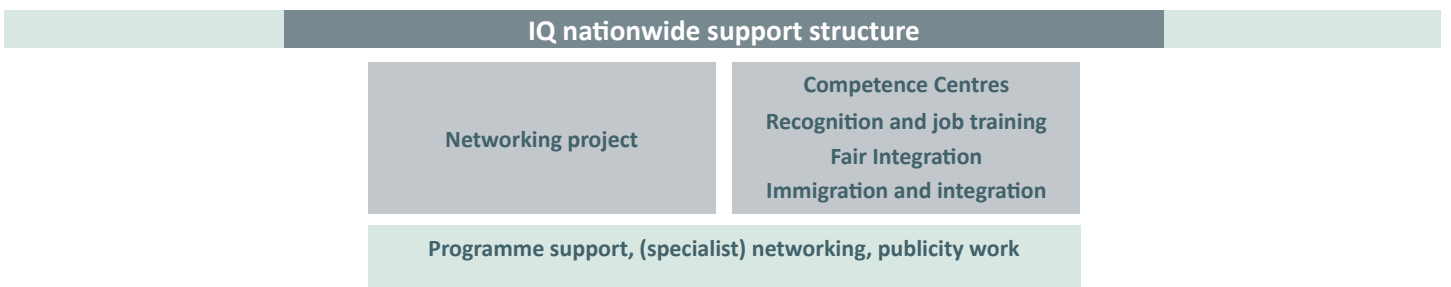
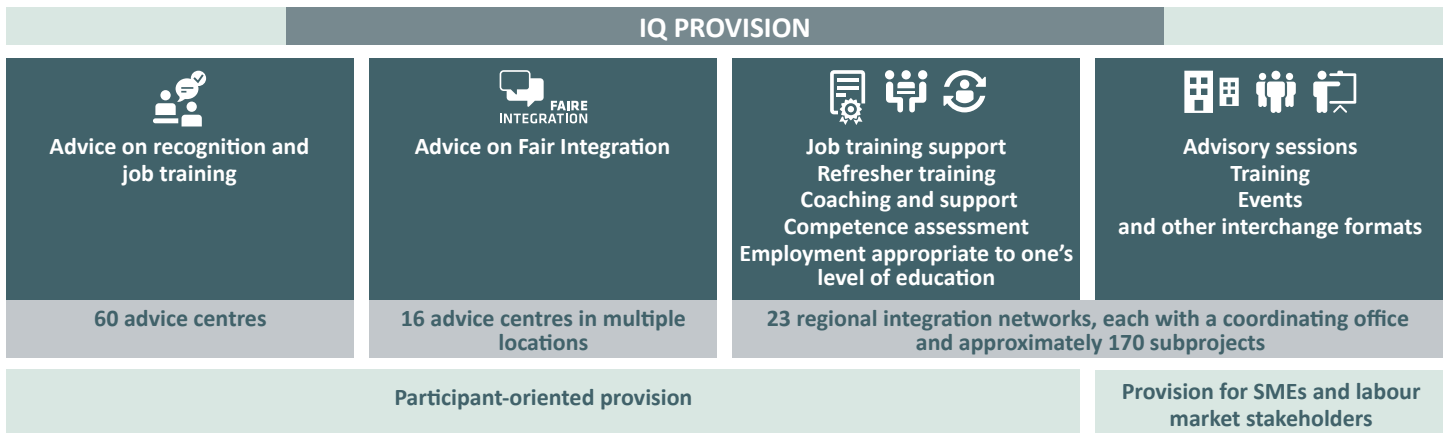


Network IQ in ESF Plus

The Network IQ – Integration through Qualification serves to improve the long-term integration of foreign adults into the labour market in a manner appropriate to the individual’s level of education. Following its success in the 2014 to 2020 ESF funding period and in light of the increasing professional matching problems on the labour market, the programme will be further developed as part of the 2021 to 2027 ESF Plus funding period. The programme builds on the results achieved so far and develops new concepts and solutions aimed at strengthening skilled worker acquisition and retention in Germany. IQ is funded by the Federal Ministry of Labour and Social Affairs (BMAS) and the European Union via the ESF Plus in two funding rounds – 2023 to 2025 and 2026 to 2028 – and is managed by the German Federal Office for Migration and Refugees (BAMF). Funding to the tune of 210 million euros for approximately 270 subprojects around the country is available in the 2023 to 2025 funding round. Partners in implementing the programme are the German Federal Ministry of Education and Research (BMBF) and the Federal Employment Agency (BA).



IQ GOALS AND IMPLEMENTATION

- Long-term integration into the labour market of people with a foreign background living in Germany
- Support in the form of advice and job training during the process of recognition of formal qualifications obtained abroad
- Competence assessment procedure to make non-formal and informal skills visible and usable
- Protection from exploitation and disadvantage in employment and overcoming precarious employment conditions
- Skilled worker acquisition and retention by means of dismantling structural obstacles and the long-term uptake of employment appropriate to one’s level of education
- Virtual further development, social media advice, artificial intelligence
- Additionality, i.e. supplementing the standard funding
- Close cooperation with the BA in consolidating advice services on recognition and job training
- Linking with BAMF offers under the German Language Promotion Ordinance (DeuFöV)

Want to know more?

Regina Kahle
regina.kahle@ebb-bildung.de

Tel. +49 (221) 932981 24
www.ebb-bildung.de

Information on the latest figures is also available at:
www.netzwerk-iq.de www.esfplus.de/iq

The Network IQ – Network Integration through Qualification is funded by the Federal Ministry of Labour and Social Affairs and the European Union through the European Social Fund Plus (ESF Plus) and administered by the Federal Office for Migration and Refugees. Strategic partners in implementing the programme are the Federal Ministry of Education and Research and the Federal Employment Agency.

Funded by:



Administered by:



In cooperation with:

